

## FACTSHEET

## REVERSE CONVERTIBLE BOND 7,5 % EUROPA TECHNOLOGIE AKTIENANLEIHE

ISIN: AT0000A2UWR2 / WKN: RC05J6

INVESTMENT Product without Capital Protection

Barrier Reverse Convertible Bonds


**Raiffeisen**  
**Certificates**
**ISSUE PRICE**  
**100.00%**
**REDEMPTION PRICE**  
**100.00%**
**ISSUE DATE**  
**Feb 11, 2022**
**MATURITY DATE**  
**Feb 12, 2024**

This factsheet contains current key figures for the certificate and a short general description. Find further information on the certificate and its opportunities and risks in the following product brochure, which was created at the beginning of the certificate's term. If you have any questions, please contact the Raiffeisen Certificates team at [info@raiffeisenzertifikate.at](mailto:info@raiffeisenzertifikate.at) or your personal consultant.

**KEY DATA**

Underlying	Worst of Basket
Underlying date/time	-
Sustainability preference	Consideration of Principal Adverse Impacts (PAI)
Barrier	EUR 59.00
Barrier reached	no
Observation barrier	Closing Price
Strike	EUR 100.00
Distance to strike	-
Interest rate total term	-
Fixed interest rate annually	7.50%
Accrued interest	Dirty (included in the price)
Max. yield remaining term (%)	-
Max. yield p.a.	-
Maturity date	Feb 12, 2024
Final valuation date	Feb 07, 2024
Issue date	Feb 11, 2022
Tradeable unit/nominal value	EUR 1,000
Expected market trend	sideways, bullish
Listing	Vienna, Stuttgart
Product currency	EUR
Underlying currency	EUR
Settlement method	Cash settlement / Physical delivery
No. of shares	-
Taxation	Capital Gains Tax / Foreign Capital Gains Tax
Paid interest rate	7.50% (EUR 75.00) on Feb 11, 2023 7.50% (EUR 75.00) on Feb 11, 2024

**CONTACT/INFORMATION**

E:	<a href="mailto:info@raiffeisencertificates.com">info@raiffeisencertificates.com</a>
T:	+431 71707 5454
W:	<a href="http://www.raiffeisencertificates.com">www.raiffeisencertificates.com</a>

**DESCRIPTION**

The **7.5% Europe Technology Reverse Convertible Bond** is redeemed at 100% nominal value at the maturity date (February 2024), provided that, during the observation period, the closing price of each of the three underlying shares (ASML Holding NV, Infineon Technologies AG and SAP SE) always quoted above the barrier of 59% of the strike (daily observation). The interest amount of 7.5% is paid out annually, regardless of the performance of the underlying shares. In case the barrier is touched or undercut by at least one of the underlying shares and at least one of the underlying shares quotes below its strike at the final valuation date, the predefined amount of the worst performing share will be delivered. If all three underlying shares quote at or above their strike at the final valuation date, the product is redeemed at 100% nominal value despite a barrier event. This certificate complies with the **sustainability standard for Raiffeisen Certificates** and takes into account important adverse impacts on sustainability factors ("PAIs").

**PRICE DEVELOPMENT SINCE ISSUE DATE****UNDERLYING WORST OF BASKET - BASKET MEMBERS****1 to 3 from 3 results**

NAME ISIN	CUR	START VALUE	BARR.	PRICE	DIST. % TO BARR.	NUM. SHARES	CHG. % PREV. DAY	CHG. % START	LAST UPDATE
SAP SE DE0007164600	EUR	108.69	64.13	170.62 (indicative)	62.42%	9.20	1.23%	56.98%	May 03, 2024 9:59 pm
ASML Holding NV NL0010273215	EUR	584.10	344.62	836.20 (indicative)	58.79%	1.71	2.74%	43.16%	May 03, 2024 9:59 pm
Infineon Technologies AG DE0006231004	EUR	34.16	20.16	31.59 (indicative)	36.19%	29.27	0.06%	-7.54%	May 03, 2024 9:59 pm

This advertisement serves as non-binding information. The author assumes no responsibility for the accuracy, timeliness and completeness of this advertisement. The provided information is not an offer and is neither a recommendation nor a financial analysis. It does not replace investor-oriented and investment-oriented advice for the purchase and sale of the financial instrument. The base prospectus (including possible amendments) and the respective Key Information Document (KID) of the financial instrument are available on the website of Raiffeisen Bank International AG ("RBI") at [www.raiffeisenzertifikate.at/en/securitiesprospectus](http://www.raiffeisenzertifikate.at/en/securitiesprospectus). The approval of the Base Prospectus by the FMA should not be understood as an endorsement of the financial instruments described herein by the FMA. You are about to purchase a product that is not simple and may be difficult to understand. We recommend that you read the prospectus before making an investment decision. The investor bears the credit risk of RBI when purchasing the financial instrument. The certificate is subject to specific rules that may already be disadvantageous in case of a probable default of RBI (e.g. suspension of interest payments) - see [www.raiffeisencertificates.com/en/basag](http://www.raiffeisencertificates.com/en/basag). The price performance shown here is only an information about the historical price performance. Information on past performance is not a reliable indicator of future performance. The investment may lead to tax obligations that vary depending on the client's personal circumstances and future changes. Any limited tax liability in Austria concerning non-resident taxpayers does not imply tax exemption in the state of residence. Please note that due to legal requirements, the times stated here are based on the coordinated world time (UTC). The Central European Time (CET), which applies in Austria, Germany and other Central European countries, is calculated by adding one hour, the summer European Central Summer Time (CEST) by adding two hours. RBI is registered in the business register FN 122119m.



Effective as of 1 December 2022 Raiffeisen Centrobank AG has transferred its certificates business to Raiffeisen Bank International AG including (i) all associated rights and obligations, and (ii) the legal position as issuer of existing securities, i.e. outstanding securities issued by Raiffeisen Centrobank AG. Therefore, as of 1 December 2022, Raiffeisen Bank International AG constitutes the issuer of and the debtor under the securities referred to in the product brochure.

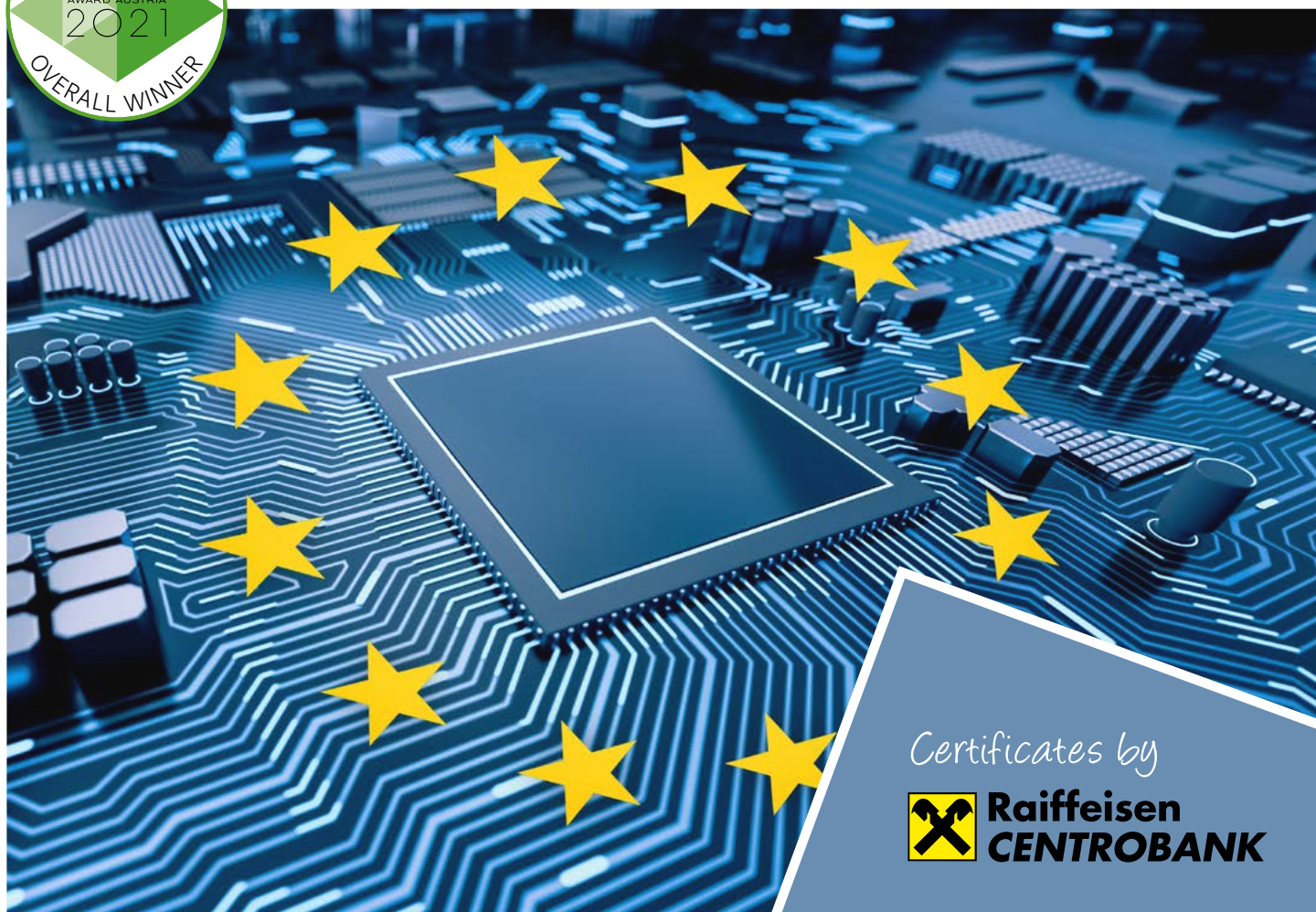
Please be aware that the product brochure reflects the legal situation at the date of its creation and does not contain any updated information about the issuer.

# 7.5% EUROPE TECHNOLOGY REVERSE CONVERTIBLE BOND



**INVESTMENT PRODUCT** WITHOUT CAPITAL PROTECTION  
REVERSE CONVERTIBLE BOND

- Underlyings: ASML Holding NV, Infineon Technologies AG, SAP SE
- 7.5% fixed annual interest rate
- Redemption of the nominal value or physical delivery of shares
- Barrier at 59% the underlying price of each share
- Full market risk if barrier is violated, issuer risk
- Further information on opportunities/risks on the following pages
- Term of 2 years



Certificates by



**Raiffeisen  
CENTROBANK**

# ATTRACTIVE FIXED INTEREST RATE ABOVE MARKET LEVEL

## In short:

The certificate provides for an attractive fixed interest rate: the interest amount is paid out annually, regardless of the performance of the three underlying shares. Whether the nominal amount is paid out at the end of the term or whether physical delivery of shares takes place depends on the performance of the underlying shares. In case of physical delivery of shares at maturity, the share with the worst performance is delivered.



This certificate complies with RCB's sustainability standard. For further information please click here: [www.rcb.at/en/sustainability](http://www.rcb.at/en/sustainability)

### KEY FACTS

Issuer*	Raiffeisen Centrobank AG
Offer	continuous issuing
ISIN	AT0000A2UWR2
Issue price	100%
Nominal value	EUR 1,000
Subscription period <sup>1</sup>	

Jan 10, 2021 - Feb 9, 2022

Initial valuation date	Feb 10, 2022
Issue value date	Feb 11, 2022
Final valuation date	Feb 7, 2024
Maturity date	Feb 12, 2024

Strike Closing price of each share at the initial valuation date

Barrier 59% of the respective strike

Observation daily (closing price)

Observation period Feb 11, 2022 - Feb 7, 2024

Fixed interest rate 7.5% annually

Interest rate payout dates Feb 11, 2023; Feb 11, 2024

Amount of shares = (nominal value/strike)

Redemption If the daily closing prices of the three underlying shares (ASML Holding NV, Infineon Technologies AG and SAP SE) always quote above the respective barrier of 59% during the observation period, or if the closing prices of each shares quote at or above their respective strike at the final valuation date, the certificate is redeemed at 100% of the nominal value.

Otherwise, physical delivery of shares is effected according to the amount predefined. Redemption is dependent on the solvency of RCB\*.

Listing Vienna, Frankfurt, Stuttgart

Quotes [www.rcb.at](http://www.rcb.at)

\* Raiffeisen Centrobank AG is a

100% owned subsidiary of Raiffeisen Bank

International AG – rating of RBI:

[www.rbiinternational.com/ir/ratings](http://www.rbiinternational.com/ir/ratings)

<sup>1</sup> Early closing or extension of the subscription period is within the sole discretion of Raiffeisen Centrobank AG.

Solid yields in a low interest rate environment, partial protection against price slumps and a short term are convincing arguments for many investors. The certificate combines all these features in one product. The investment product without capital protection provides a fixed annual interest payment of 7.5% with a partial protection up to the barrier of 59% of the starting value as safety mechanism. The certificate has a term of two years. Further details regarding opportunities and risks are listed on the next page.

### SHARE BASKET

The **share basket** of the Reverse Convertible Bond consists of three heavyweights of the European technology sector:

- ASML Holding N.V. is a Dutch company and the world's largest supplier of lithography systems for the semiconductor industry. Most international chip manufacturers are customers of ASML.
- The German company Infineon Technologies AG is a worldwide leading supplier of semiconductors. The company focuses on energy efficiency, mobility and safety.
- The German SAP SE is the biggest European software development company. It is mainly known for its business software solutions.

### FUNCTIONALITY

Reverse Convertible Bonds have a predefined **maturity date**, a **fixed interest rate** and a **strike**, set at the initial valuation date. Moreover, **Reverse Convertible Bonds** issued by Raiffeisen Centrobank AG are equipped with a **barrier** set below the **strike**, which serves as an additional safety mechanism. These parameters remain unchanged during the term. The interest rate, which is above market level, provides investors with an attractive yield if the Reverse Convertible Bond is redeemed at 100% of the nominal value. In case of **physical delivery of the shares**, the interest amount mitigates or may even overcompensate the loss incurred from the delivery of shares.

At the initial valuation date, the closing prices of the three underlying shares are fixed as **strikes** and the **number of shares** for potential physical delivery is determined. Additionally, the **respective barriers** (59% of each respective strike) are set.

- The **fixed interest rate** of 7.5% is **paid out** annually regardless of the performance of the three underlying shares (equals two times EUR 75 per nominal value during the term).
- Redemption** of the nominal value at the end of the term depends on the performance of the three underlying shares. During the observation period the closing prices of the shares are compared with their respective barrier on a daily basis.



## DEFINED NUMBER OF SHARES

The number of shares to be delivered is determined as follows: **Number of shares = nominal value/starting value**. Usually this does not result in whole numbers. Due to the fact that shares are traded in whole numbers only, in the event of physical delivery the residual value is paid out in cash (=cash settlement) according to the market value: **Fraction of the shares x closing price of the share at the final valuation date = cash settlement**

This certificate provides for **physical delivery** of shares. In the most unfavourable case, the investor only gets delivered the worst performing share in the amount predefined.

## RELEVANT STOCK EXCHANGE

ASML Holding NV:	Euronext Amsterdam
Infineon Tech.:	XETRA Frankfurt
SAP SE:	XETRA Frankfurt

## SUITED MARKET EXPECTATION

declining sideways rising

## YOUR INVESTMENT HORIZON

< 3 years 3 to 5 years > 5 years

## NOTE

The referenced opportunities and risks represent a selection of the most important facts regarding the product.

You are about to purchase a product that is not easy and difficult to understand.

For further information see the Base Prospectus (including possible amendments) – approved by the Austrian Financial Market Authority (FMA), deposited at the Oesterreichische Kontrollbank AG and published at [www.rcb.at/en/securitiesprospectus](http://www.rcb.at/en/securitiesprospectus) (we recommend reading the prospectus before making an investment decision) – in the key information document and among „Customer Information and Regulatory Issues“ at [www.rcb.at/en/customerinformation](http://www.rcb.at/en/customerinformation)

At the final valuation date, **one of the following scenarios** will apply:

### SCENARIO 1: All shares quoted daily ABOVE their barrier

If the daily closing prices of ASML Holding NV, Infineon Technologies AG AND SAP SE are on each day of the observation period **above the barrier of 59% of their respective strike** during the observation period, **redemption** is effected **at 100% of the nominal value**. Provided that none of the three shares ever closes 41% or more below its respective strike, investors obtain the nominal amount of EUR 1,000 at the maturity date. This amount represents the maximum payout.

### SCENARIO 2: Barrier was TOUCHED/UNDERCUT by at least one of the shares

If the closing price of **ONE** or **MORE** of the shares (ASML Holding NV, Infineon Technologies AG, SAP SE) is **at or below the respective barrier of 59%** during the observation period, the investor will only receive **the worst performing share** (percentage change from strike to closing price at the final valuation date) in the amount predefined at the initial valuation date instead of a redemption of the nominal value. The difference to the next whole number is paid out. If the closing prices of all three shares are at or above their respective strike price on the last valuation date – despite the occurrence of a barrier event – the investor will receive the nominal value of EUR 1,000 at the end of the term. Even if the barrier was touched or undercut, this amount represents the maximum payout.

**EXAMPLE – assumption:** if the initial valuation date had been December 17, 2021

SHARE	STRIKE* 100%		BARRIER 59%		NUMBER OF SHARES** (NOMINAL VALUE / STRIKE)
ASML Holding NV	EUR	662.000	EUR	390.580	1.5106 shares
Infineon Technologies AG	EUR	38.905	EUR	22.9540	25.7036 shares
SAP SE	EUR	123.520	EUR	72.8768	8.0959 shares

\* ... exemplary strike in relation to the closing price of the respective share on December 17, 2021. \*\* The fraction is paid out  
Source: Reuters, ASML.LAS (ISIN: NL0010273215), SAPG.DE (ISIN: DE0007164600), IFXGn.DE (ISIN: DE0006231004)

## OPPORTUNITIES

- **Attractive fixed interest rate:** The fixed annual interest amount (7.5% p.a.) is paid out regardless of the performance of the three underlying shares.
- **Safety buffer:** Attractive yield in sideways moving and slightly decreasing markets due to the partial protection against falling prices down to the barrier of 59%
- **Flexibility:** Tradability on the secondary market, no management fees

## RISKS

- **Barrier violation:** If the respective barrier is touched or undercut by the closing price of at least one of the three shares, the investor is entirely subject to market risk, without any protective mechanism. In case of physical delivery, the market value of the delivered shares will be below the nominal amount. Close to the barrier, there can be disproportionate price movements of the reverse convertible bond.
- **Limited yield opportunity:** The opportunity for yields is in any case limited to the fixed interest rate (2 x 7.5% during the term). Investors do not participate in price increases of the underlyings beyond their respective strikes.
- **Issuer risk / Bail-in:** Certificates are not covered by the Deposit Protection Scheme. Investors are exposed to the risk that Raiffeisen Centrobank AG might be unable to fulfil its payment obligations in respect of the described financial instrument such as in the event of insolvency (issuer risk) or an official directive (Bail-in). A total loss of the capital invested is possible.

**DISCLAIMER**

In spite of all possible care taken, the data contained in this advertisement are provided purely as non-binding information. This advertisement constitutes neither investment advice nor, an offer nor a recommendation nor an invitation to execute a transaction. The information contained in this advertisement is generic and no consideration is given to the personal circumstances of potential investors. The information contained in this advertisement substitutes neither the necessary individual investment advice for the purchase or sale of investments nor shall any investment decision be taken on the basis of this document. This advertisement has not been prepared in accordance with legal requirements designed to promote the independence of investment research and is not subject to the prohibition on dealing ahead of the dissemination of investment research.

The complete information for all financial instruments described in this advertisement as well as the sole legal basis for potential transactions in one of the described financial instruments is the Base Prospectus (including any possible supplements) which has been approved by the Austrian Financial Market Authority (FMA) in connection with the corresponding Final Terms of the described financial instruments. The approved Base Prospectus (including any possible supplements) and the respective Final Terms have been deposited at the Oesterreichische Kontrollbank AG as the notification office. The approval of the Base Prospectus should not be construed as an endorsement of the financial instrument described herein by the FMA. Additional information on the financial instruments described herein may also be obtained from the respective key information documents (KIDs) that are available for download free of charge on the website of Raiffeisen Centrobank AG ([www.rcb.at](http://www.rcb.at)) by entering the International Securities Identification Number (ISIN) of the respective financial instrument.

Unless otherwise explicitly expressed in any of the cited documents above, no measures have been taken in any national legal system which should permit a public offering of the products described therein.

Raiffeisen Centrobank AG explicitly excludes any liability in relation to the correctness, appropriateness and completeness of the information presented herein.

Certificates are risky instruments of wealth investment. Should the price of the respective underlying instrument of a certificate develop adversely, an investor may lose part or all of his or her invested capital. Certificates react more strongly or weakly to changes of the price of the underlying instrument depending on a number of factors (e.g. volatility or correlation of the underlying instruments, interest, dividends, remaining term, changes in foreign exchange rates) and do not move simultaneously with the underlying.

Under certain circumstances the issuer is authorized to redeem the certificates prior to the agreed repayment date.

**Issuer Risk/Creditor Participation ("bail-in"):** Any payments during or at the end of the term of the certificates depend on the solvency of the issuer ("issuer risk"). Investors are therefore exposed to the risk that Raiffeisen Centrobank AG might be unable to fulfil its payment obligations in respect of the described financial instrument such as in the event of insolvency ("issuer risk") or an official directive ("bail-in"). The resolution authority may also issue such an order before any insolvency proceedings if the issuer is judged to be in crisis. Under these circumstances the resolution authority has wide-ranging powers to take action (so-called "bail-in instruments"). For example, it can reduce the claims of investors in respect of the described financial instruments to zero, terminate the described financial instruments, or convert them into shares of the issuer and suspend investors' rights. More detailed further information is available at [www.rcb.at/en/basag](http://www.rcb.at/en/basag). A total loss of the invested capital is possible.

Past performance is no reliable indicator of future results. Please refer to the Base Prospectus for additional disclosures on risks as well as further information.

The information presented does not constitute binding tax advice. Tax treatment of investments is dependent on the personal situation of the investor and may be subject to change. As regards tax treatment and impact on the investor's individual tax situation, the investor is advised to consult with a tax advisor. This report is based on the knowledge the persons preparing the document have obtained up to the date of creation. Please note that the legal situation may change due to legislative amendments, tax directives, opinions of financial authorities, jurisdiction etc.

The price of the Reverse Convertible Bond is dependent on the underlying's price. Adverse performances of the underlying may cause price fluctuations of the Reverse Convertible Bond. If the Reverse Convertible Bond is sold, there is the risk to incur a substantial loss or even a total loss of the invested capital ("market risk"). The Reverse Convertible is subject to several influencing factors and need not develop simultaneously to and in accordance with the underlying's performance. Such influencing factors include e.g. intensity of the underlying's price fluctuations (volatility), interest rates, solvency of the issuer or remaining term. If the Reverse Convertible Bond is sold prior to the end of the term, there is the risk to incur a partial or even total loss of the invested capital (price performance). Dividends and similar rights associated with the underlying are taken into account when structuring the Reverse Convertible Bond and are not paid out.

Certificates issued by RCB are no financial products as defined in the Regulation (EU) 2019/2088

Supervisory Authorities: Austrian Financial Market Authority (FMA), Austrian National Bank, European Central Bank within the Single Supervisory Mechanism (SSM). Imprint according to the Austrian Media Act: Media Owner and Publisher is Raiffeisen Centrobank AG | Member of RBI Group | Am Stadtpark 9, 1030 Vienna/Austria.

Further information may be obtained from the consultant at your local bank, on the Internet at [www.rcb.at](http://www.rcb.at) or on the product hotline of Raiffeisen Centrobank AG: **+43 1/51520 - 484**.

Your contacts at Raiffeisen Centrobank AG, Am Stadtpark 9, 1030 Vienna/Austria:

<b>Product Hotline</b>	Ph.: +43 1/51520 - 484	<a href="mailto:produkte@rcb.at">produkte@rcb.at</a>
<b>Heike Arbter</b> (Member of the Board)	Ph.: +43 1/51520 - 407	<a href="mailto:heike.arbter@rcb.at">heike.arbter@rcb.at</a>
<b>Philipp Arnold</b> (Head of Structured Products Sales)	Ph.: +43 1/51520 - 469	<a href="mailto:philipp.arnold@rcb.at">philipp.arnold@rcb.at</a>
<b>Roman Bauer</b> (Head of Trading)	Ph.: +43 1/51520 - 384	<a href="mailto:roman.bauer@rcb.at">roman.bauer@rcb.at</a>
<b>Mariusz Adamiak</b>	Ph.: +43 1/51520 - 395	<a href="mailto:mariusz.adamiak@rcb.at">mariusz.adamiak@rcb.at</a>
<b>Raphael Bischinger</b>	Ph.: +43 1/51520 - 432	<a href="mailto:raphael.bischinger@rcb.at">raphael.bischinger@rcb.at</a>
<b>Maida Blentic</b>	Ph.: +43 1/51520 - 394	<a href="mailto:maida.blentic@rcb.at">maida.blentic@rcb.at</a>
<b>Peidong Cao</b>	Ph.: +43 1/51520 - 493	<a href="mailto:peidong.cao@rcb.at">peidong.cao@rcb.at</a>
<b>Lukas Florreither</b>	Ph.: +43 1/51520 - 397	<a href="mailto:lukas.florreither@rcb.at">lukas.florreither@rcb.at</a>
<b>Walter Friehsinger</b>	Ph.: +43 1/51520 - 392	<a href="mailto:walter.friehsinger@rcb.at">walter.friehsinger@rcb.at</a>
<b>Lukas Hackl</b>	Ph.: +43 1/51520 - 468	<a href="mailto:lukas.hackl@rcb.at">lukas.hackl@rcb.at</a>
<b>Jan Kausek</b>	Ph.: +43 1/51520 - 486	<a href="mailto:jan.kausek@rcb.at">jan.kausek@rcb.at</a>
<b>Kathrin Korinek</b>	Ph.: +43 1/51520 - 401	<a href="mailto:kathrin.korinek@rcb.at">kathrin.korinek@rcb.at</a>
<b>Udo Leser</b>	Ph.: +43 1/51520 - 350	<a href="mailto:udo.leser@rcb.at">udo.leser@rcb.at</a>
<b>Jaroslav Kysela</b>	Ph.: +43 1/51520 - 481	<a href="mailto:jaroslav.kysela@rcb.at">jaroslav.kysela@rcb.at</a>
<b>Aleksandar Makuljevic</b>	Ph.: +43 1/51520 - 385	<a href="mailto:aleksandar.makuljevic@rcb.at">aleksandar.makuljevic@rcb.at</a>
<b>Monika Mrnustikova</b>	Ph.: +43 1/51520 - 386	<a href="mailto:monika.mrnustikova@rcb.at">monika.mrnustikova@rcb.at</a>
<b>Anja Niederreiter</b>	Ph.: +43 1/51520 - 483	<a href="mailto:anja.niederreiter@rcb.at">anja.niederreiter@rcb.at</a>
<b>Michal Polin</b>	Ph.: +421/257203 - 041	<a href="mailto:michal.polin@rcb.sk">michal.polin@rcb.sk</a>
<b>Martin Rainer</b>	Ph.: +43 1/51520 - 391	<a href="mailto:martin.rainer@rcb.at">martin.rainer@rcb.at</a>
<b>Gabriele Rihtar</b>	Ph.: +43 1/51520 - 379	<a href="mailto:gabriele.rihtar@rcb.at">gabriele.rihtar@rcb.at</a>
<b>Ludwig Schweighofer</b>	Ph.: +43 1/51520 - 460	<a href="mailto:ludwig.schweighofer@rcb.at">ludwig.schweighofer@rcb.at</a>
<b>Johanna Stich</b>	Ph.: +43/51520 - 351	<a href="mailto:johanna.stich@rcb.at">johanna.stich@rcb.at</a>
<b>Andreas Tosch</b>	Ph.: +43/51520 - 470	<a href="mailto:andreas.tosch@rcb.at">andreas.tosch@rcb.at</a>
<b>Alexander Unger</b>	Ph.: +43 1/51520 - 478	<a href="mailto:alexander.unger@rcb.at">alexander.unger@rcb.at</a>
<b>Fabiola Vicenova</b>	Ph.: +421/257203 - 040	<a href="mailto:fabiola.vicenova@rcb.sk">fabiola.vicenova@rcb.sk</a>
<b>Martin Vonwald</b>	Ph.: +43 1/51520 - 338	<a href="mailto:martin.vonwald@rcb.at">martin.vonwald@rcb.at</a>
<b>Wilhelmine Wagner-Freudenthal</b>	Ph.: +43 1/51520 - 381	<a href="mailto:wilhelmine.wagner-freudenthal@rcb.at">wilhelmine.wagner-freudenthal@rcb.at</a>



Certificates by



**Raiffeisen  
CENTROBANK**